

SL11(SL52810)

SURFACE-MOUNTED STEP/STAIR LIGHT SPECIFICATIONS



Job Information	
Project Name	
Type	
Location	
Quantity	
Date	

DESCRIPTION

A key advantage of the SL11 is its flexible mounting system, specifically developed for renovation projects where existing wall cut-outs may no longer be usable. The fixture is installed using two adjustable mounting clips that can be fixed at variable distances on the wall, allowing installers to easily adapt the installation to site conditions and existing openings.

Designed for elegant and reliable illumination of stairs, pathways, and architectural wall applications, the SL11 features a durable extruded aluminum housing with an integrated heat sink for excellent thermal management and long-term performance.

The fixture is equipped with a P95 frosted lens that provides smooth, glare-controlled illumination with high visual comfort. Standard sizes are available in 9.5" (7W) and 13" (14W), while customizable lengths are also available to meet project-specific requirements.

Its anodized and powder-coated finishes, offered in a range of standard and custom colors, allow seamless integration into modern architectural environments.

OVERVIEW

- Flexible mounting system
- Stairs, pathways, and architectural wall applications
- True color - 80 color rendering index (CRI), produces outstanding illumination.
- Anodized and powder-coated finishes, offered in a range of standard and custom colors

PERFORMANCE

MODEL NAME	SL11(SL52810)
POWER CONSUMPTION(±10%)	7 W/ 14W
INPUT VOLTAGE	120-277 VAC , 50/60Hz
LUMINOUS FLUX	228 Lm
EFFICACY (3000K RA80)	30 Lm/w
DIMMING	0-10V/Triac
CCT	3000/4000K
CRI	80
POWER FACTOR	0.98
OPTIC	5LED/2X5LED STRIP, 350mA
LENS	P95 Frosted Lens
MOUNTING OPTION	Surface Mount
TYPE	Wall/Stairs Light
FINISH	Powder Coating
FIXTURE COLOR	Anodized Black/Gold/Silver/Blue/Bronze/Red/Custom Color
IP RATING	IP66
APPLICATIONS	Outdoor
OPERATION TEMPERATURE	-20°C TO + 55°C(-4°F TO 131°F)
CERTIFICATIONS	cETL Listed
WARRANTY	5 Years
LIFE TIME OF LED @TA=25°C	50000 HRS, L80

SL11(SL52810)

SURFACE-MOUNTED STEP/STAIR LIGHT SPECIFICATIONS



SPECIFICATIONS

■ OPTICS

The fixture is equipped with a P95 frosted lens that provides smooth, glare-controlled illumination with high visual comfort. Standard sizes are available in 9.5" (5 LED – 7W) and 13" (2x5 LED – 14W), while customizable lengths are also available to meet project-specific requirements.

■ ELECTRICAL

Voltage: 120-277 VAC , 50/60Hz

■ ENVIRONMENT & CERTIFICATIONS

cETL listed for wet locations

■ WARRANTY

5 years limited warranty

■ MOUNTING

Surface mounted installation

■ FINISH

The anodized and powder-coated finish ensures a uniform appearance, offering long-term durability and superior aesthetics.

■ HOUSING MATERIAL

Extruded aluminum housing ensures durability and efficiency, with heat resistance polycarbonate lens.

■ LED SYSTEM

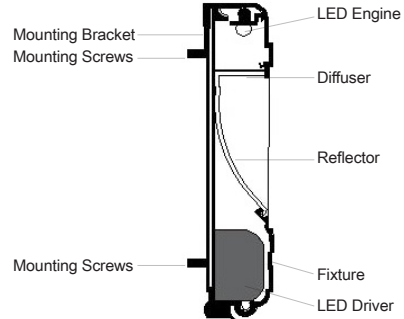
CRI With 80 color rendering index (CRI), this product delivers outstanding illumination, featuring tight chromatically specifications and a precise color binning process to ensure consistency in CRI and CCT.

CCT Available in 3000K, 4000K with excellent color consistency.

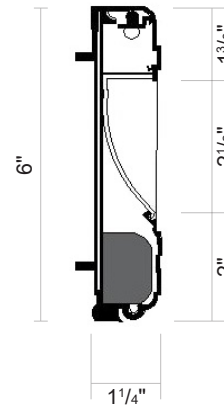
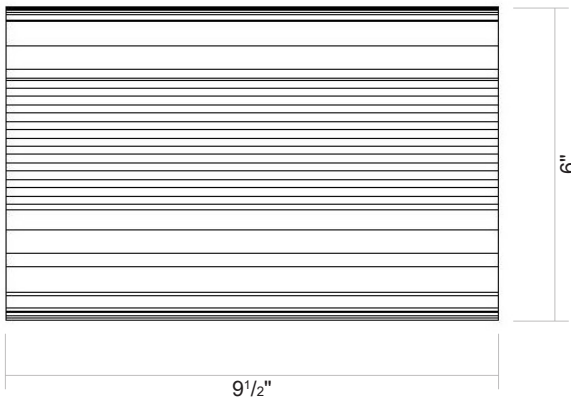
SL11(SL52810)

SURFACE-MOUNTED STEP/STAIR LIGHT SPECIFICATIONS

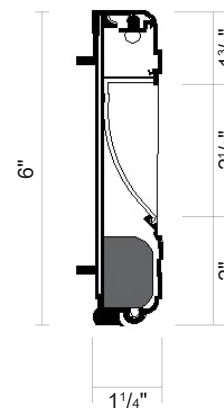
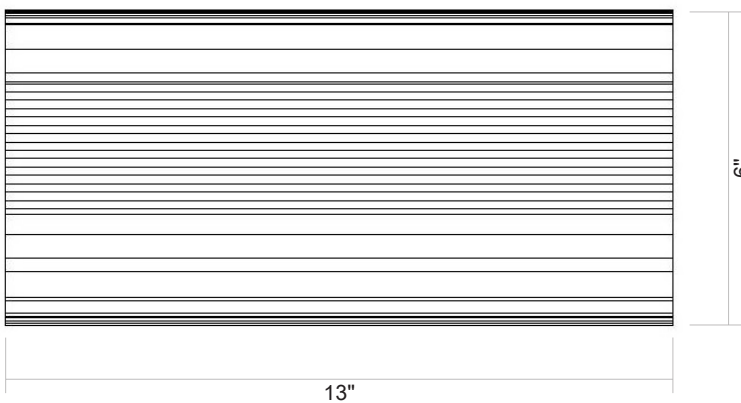
PRODUCT MODELS & DIMENSIONS



■ 7W (5LED)



■ 14W (2X5LED)



SL11(SL52810)

SURFACE-MOUNTED STEP/STAIR LIGHT SPECIFICATIONS



FINISHING COLOR



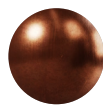
Black



Gold



Blue



Bronze

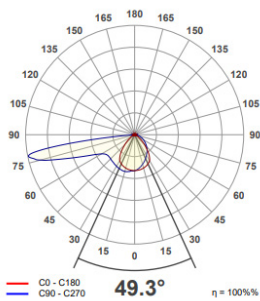


Silver



Red

LIGHT DISTRIBUTION



SL11(SL52810)

SURFACE-MOUNTED STEP/STAIR LIGHT SPECIFICATIONS

PRODUCT ORDERING GUIDE

EXAMPLE: SL11-7W-30K-V-BRZ

SL11	-7W	-30K	-V	-BRZ
Series	Wattage	CCT	Dimming	Fixture Color

SERIES	WATTAGE	CCT	DIMMING	FIXTURE COLOR
SL11	7W: 9.5"(5LED-7W) 14W: 13"(2x5LED-14W)	30K: 3000K 40K: 4000K	V: 0-10V T: Triac N: None	BLK: Black GLD: Gold BLU: Blue BRZ: Bronze SLV: Silver RED: Red CUST: Custom Color ^①

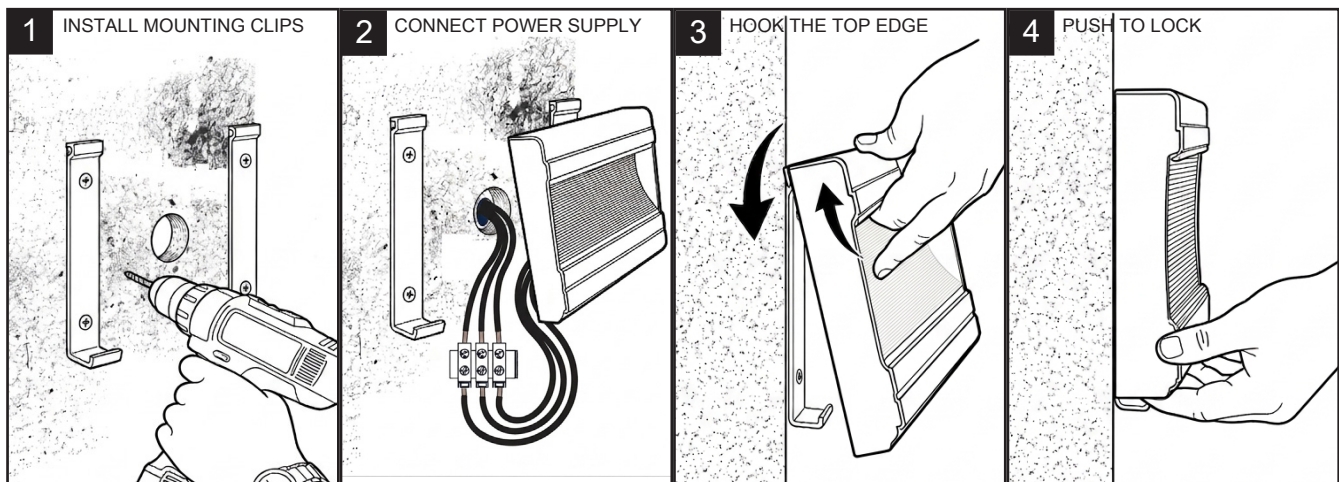
① Custom colours are available upon request. Please provide a paint chip or RAL number and specify CUST at the end of the order number.

INSTALLATION

Please read these instructions carefully before commencing installation and retain for future reference. If in doubt, we advise that you consult a qualified electrician to install the product. These products must not be modified. If any modification is made it may invalidate the warranty and may render the product unsafe. All electrical installations must be carried out according to national electrical code & local regulations.

Important Safety Notes

1. Switch off the electricity at the mains before commencing installation (if a fuse box is used) remove the appropriate circuit fuse to avoid accidental switching on of the mains supply.
2. Connect to a 120-277V supply in accordance with relevant electrical standards.
3. Make sure all connections are tight with no loose strands.
4. Ensure fire regulations are not breached when fitting your lights.
5. If you are in any doubt regarding these instructions, consult a qualified electrician.



Fix the two mounting clips to the wall using screws.
Note: Keep the L-shaped side facing downward.

Connect the fixture wires to the main power supply.

Hook the upper rear groove of the fixture onto the clips.

Push the bottom of the fixture toward the wall until it locks securely in place.