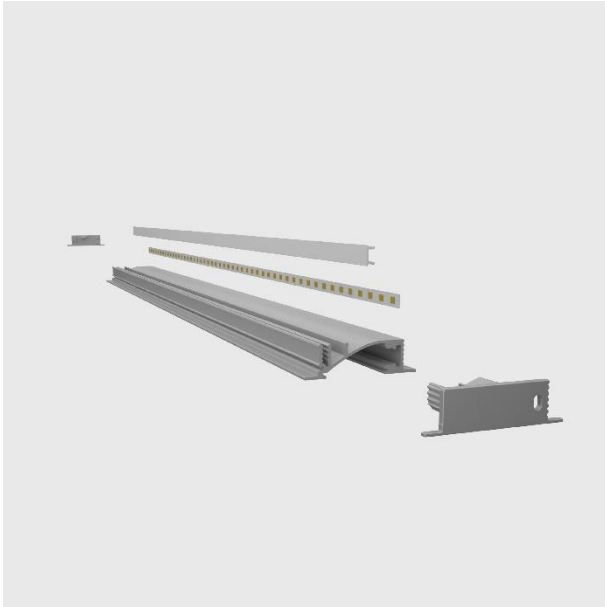


# LT5315

## LED LINEAR LIGHT PROFILE SPECIFICATIONS



Job Information	
Project Name	
Type	
Location	
Quantity	
Date	



- SILVER
- BLACK
- WHITE

## DESCRIPTION

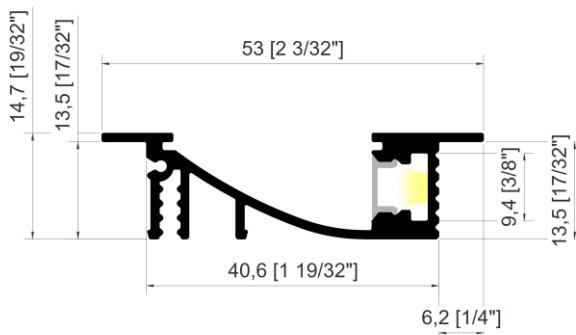
LT5315 is an architectural aluminum LED profile designed for clean, glare-free indirect lighting. Its geometry is ideal when the designer wants a soft reflected glow rather than a visible light source, creating a comfortable ambient effect with a crisp, modern finish. Perfect for cove lighting, step lighting, and narrow baseboard details, LT5315 adds a subtle wash of light right where the wall meets the floor. Great for wayfinding and elevated visual depth. It also works beautifully for under-cabinet and closet applications, delivering indirect illumination that enhances surfaces without harsh hotspots.

Available in 10' lengths, a variety of colors, and diffuser options, it's the ideal solution for bold, creative, and clean lighting integration.

## PERFORMANCE

MODEL NAME	LT5315
MOUNTING OPTIONS	RECESSED
LIGHT SOURCE TYPE	COB/SMD LED STRIP
LIGHT SOURCE WIDTH	7 mm MAX
PC COVER	OPAL/TRANSPARENT/DIFFUSER
FINISH	ANODIZED PAINTING
COLOR	BLACK/WHITE/SILVER
IP	20
APPLICATIONS	INTERIOR, RESIDENTIAL, COMMERCIAL

## DIMENSIONS



# LT5315

## LED LINEAR LIGHT PROFILE SPECIFICATIONS

### PRODUCT ORDERING GUIDE

EXAMPLE:LT5315-3M-SL-O

SERIES	LENGTH	REFLECTOR FINISH	PC COVER
LT5315	1M	WH: WHITE	O: OPAL
	2M	SL: SILVER	C: CLEAR
	3M	BK: BLACK	D: DIFFUSER

