

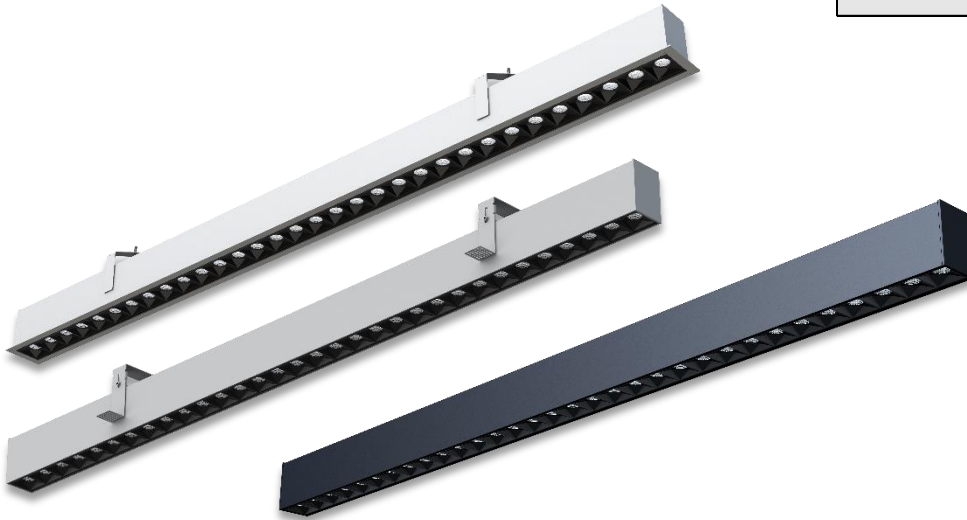
SRL04

SURFACE/RECESSED LINEAR LIGHT SPECIFICATIONS



Job Information

Project Name	
Type	
Location	
Quantity	
Date	



DESCRIPTION

SRL04 is a surface mounted/recessed linear fixture with multi-cell louvered optics. It is ideal for commercial interiors and workspace environments. Its design balances clean aesthetics with performance, delivering uniform, visually comfortable light in demanding interior settings. This linkable design also features micro reflector and anti-glare cover.

OVERVIEW

- Linkable direct linear light
- Simple, easy and quick installation
- Efficient lighting up to 100 LM/W
- UGR<18 provides visual comfort

PERFORMANCE

MODEL NAME	SRL04	
POWER CONSUMPTION(±10%)	30W	35W
LUMINOUS FLUX	3200 LM	3600 LM
EFFICIENCY	UP TO 100 LM/W	
INPUT VOLTAGE	120-277VAC	
POWER FACTOR	≥0.9	
DIMMING	0-10V, DALI	
CCT	3000K/3500K/4000K/5000K/6000K	
CRI	>80	
UGR LEVEL	<18	
BEAM ANGLE	75°	
MOUNTING OPTIONS	SURFACE TRIM RECESSED TRIM-LESS RECESSED	
FINISH	SILVER/WHITE/BLACK	
IP RATING	IP20	
OPERATING TEMPERATURE	-20°C TO + 45°C (-4°F TO 113°F)	
LIFE TIME OF LED @TA=25°C	50000 HRS L80	
WARRANTY	5 YEARS	
APPLICATIONS	INDOORS	

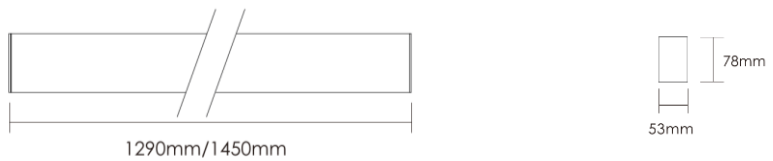
PRODUCT ORDERING GUIDE

EXAMPLE: SRL04-30W-S-3000-V-S

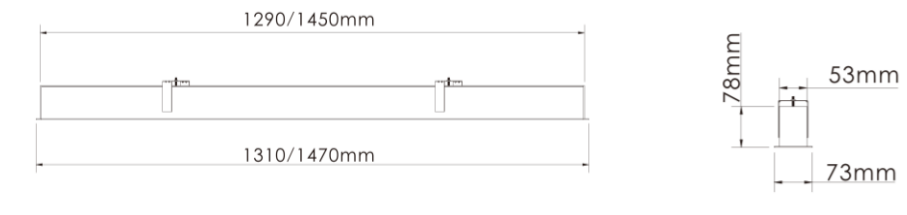
SERIES	WATTAGE	MOUNTING	CCT	DIMMING	FINISH
SRL04	30W	S: SURFACE	3000	D; DALI	B: BLACK
	35W	TR: TRIM RECESSED	3500	V: 0-10V	S: SILVER
		TLR: TRIM-LESS RECESSED	4000	N: NONE	W: WHITE
		5000			
		6000			

DIMENSIONS

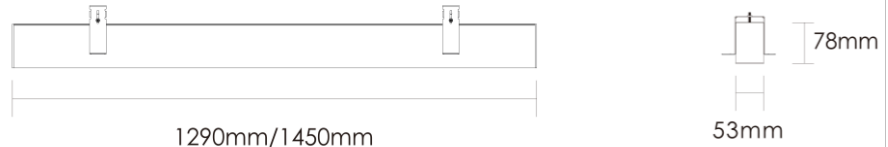
SURFACE



TRIM RECESSED



TRIM R-LESS ECESSED



FEATURES

► Optics

80° beam angle, UGR<18
Downward (direct) illumination,

► Electrical

Voltage 120-277VAC

► Environment & Certifications

cETL listed for dry locations

► Warranty

5 years limited warranty

► Mounting

Surface mounted, recessed with trim or trim-less, linkable.

► Finish

The powder-coated finish ensures a uniform appearance, offering long-term durability and superior aesthetics.

► Housing Material

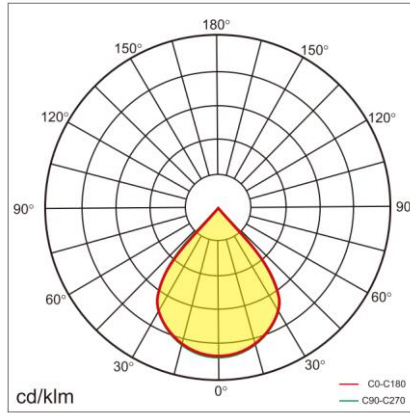
Die-cast aluminum housing ensures durability and efficiency, with heat resistance polycarbonate lens.

► LED System

CRI With a 80+ color rendering index (CRI), this product delivers outstanding illumination, featuring tight chromatically specifications and a precise color binning process to ensure consistency in CRI and CCT.

CCT Available in 3000K, 3500K, 4000K, 5000K, and 6000K with excellent color consistency.

DISTRIBUTION



No gap and no light escapes when linked together

Push-in, push-out structure lamp, easy for installation and maintenance

100 lm/W flicker free, CRI>80, SDCM 3, L80 B10 50,000 HRS

80° beam angle direct, UGR<18

Support for smart control functions, 0-10V dimming

SRL04

SURFACE/RECESSED LINEAR LIGHT SPECIFICATIONS

