

# PM-BL09

## LED BOLLARD LIGHT SPECIFICATIONS



### Job Information

|              |  |
|--------------|--|
| Project Name |  |
| Type         |  |
| Location     |  |
| Quantity     |  |
| Date         |  |

## DESCRIPTION

The BL09 is a slim and creative bollard light which with its unique aesthetic design can help light up your project space. Intelligent controls such as PIR sensors, light control sensors save on energy bills. IP66 and IK08 rated, 1/2 zoned independent control, also features UV resistant polycarbonate optics for a variety of outdoor applications.

## OVERVIEW

- 1/2 zone area can be controlled independently
- 110 LPW @4000K 80Ra
- PIR sensor, photocell sensor optional
- Standard power and color temperature adjustable
- IP66 and IK08
- Excellent corrosion resistance, enduring salt spray testing for over 720 hours
- Lens polarized optical design, wider lighting range
- Custom height of 32" to 42" available, head assembly and pole assembly can be shipped separately

## PERFORMANCE

|                          |   |
|--------------------------|---|
| MODEL NAME               | PM-BL09   |
| POWER CONSUMPTION(±10%)  | 15/20/25W Selectable                                      |
| INPUT VOLTAGE            | 120-347VAC, 50/60 Hz                                      |
| LUMINOUS FLUX (±10%)     | 15W: 1505-1595 Lm<br>25W: 2333-2498 Lm                    |
| EFFICACY (4000K RA80)    | 110Lm/W   |
| DIMMING                  | 0-10V @25W  |
| CCT                      | 3000K/4000K/5000K (Selectable)                            |
| CRI                      | 80  |
| CONTROL                  | PIR Sensor / Photocell / Dimming                          |
| SURGE PROTECTION         | 4kV L-N, 4kV L/N-E  |
| POWER FACTOR             | >0.9  |
| FLICKER FACTOR           | <5%   |
| THD                      | <20% @120-347V  |
| LIGHT SOURCE             | LED 2835  |
| MATERIAL                 | Aluminum Body, PC Lens                                    |
| FINISH                   | Powder Coating  |
| FIXTURE COLOR            | Black   |
| LUMINAIRE NET WEIGHT     | 5.07kg (11.17Lbs) to 5.77kg (12.72Lbs)<br>based on height |
| PRODUCT DIMENSION        | Ø7.28"xØ5.24"xH32"-42"                                    |
| IP RATING                | IP66  |
| IK RATING                | IK08  |
| APPLICATIONS             | Outdoor (Such Pathways, Park, etc)                        |
| OPERATION TEMPERATURE    | -40°C TO +50°C (-40F TO +122F)                            |
| CERTIFICATIONS           | cETL Listed   |
| WARRANTY                 | 5 Years   |
| LIFESPAN OF LED @TA=25°C | 50000 Hours (Based on LM79 Report)                        |



## SPECIFICATIONS

### ■ OPTICS

Full Zone (170°) and half zone (112°) photometric options are available

### ■ ELECTRICAL

Voltage: 120-347 V AC, 50 / 60 Hz  
Surge Protection: 4KV L-N, 4KV L/N-E  
Flicker Factor: <5%  
THD: <20%  
Power Factor: >0.9

### ■ ENVIRONMENT & CERTIFICATIONS

cETL listed for wet locations

### ■ WARRANTY

5 years limited warranty

### ■ CONTROL

- Photocell: Lights out 30 seconds after sunrise, lights on 5 seconds after sunset
- RIP Sensor: When no one, the light power is 3W, sensing someone 1 second 100% light, light 30 seconds after no one automatically reduced to the set power

### ■ FINISH

The powder-coated finish ensures a uniform appearance, offering long-term durability and superior aesthetics

### ■ HOUSING MATERIAL

Die-cast aluminum housing ensures durability and efficiency with C4 anticorrosion protection for harsh environments. Equipped with UV and heat resistance polycarbonate lens.

### ■ LED SYSTEM

CRI With a 80+ color rendering index (CRI), this product delivers adequate illumination.

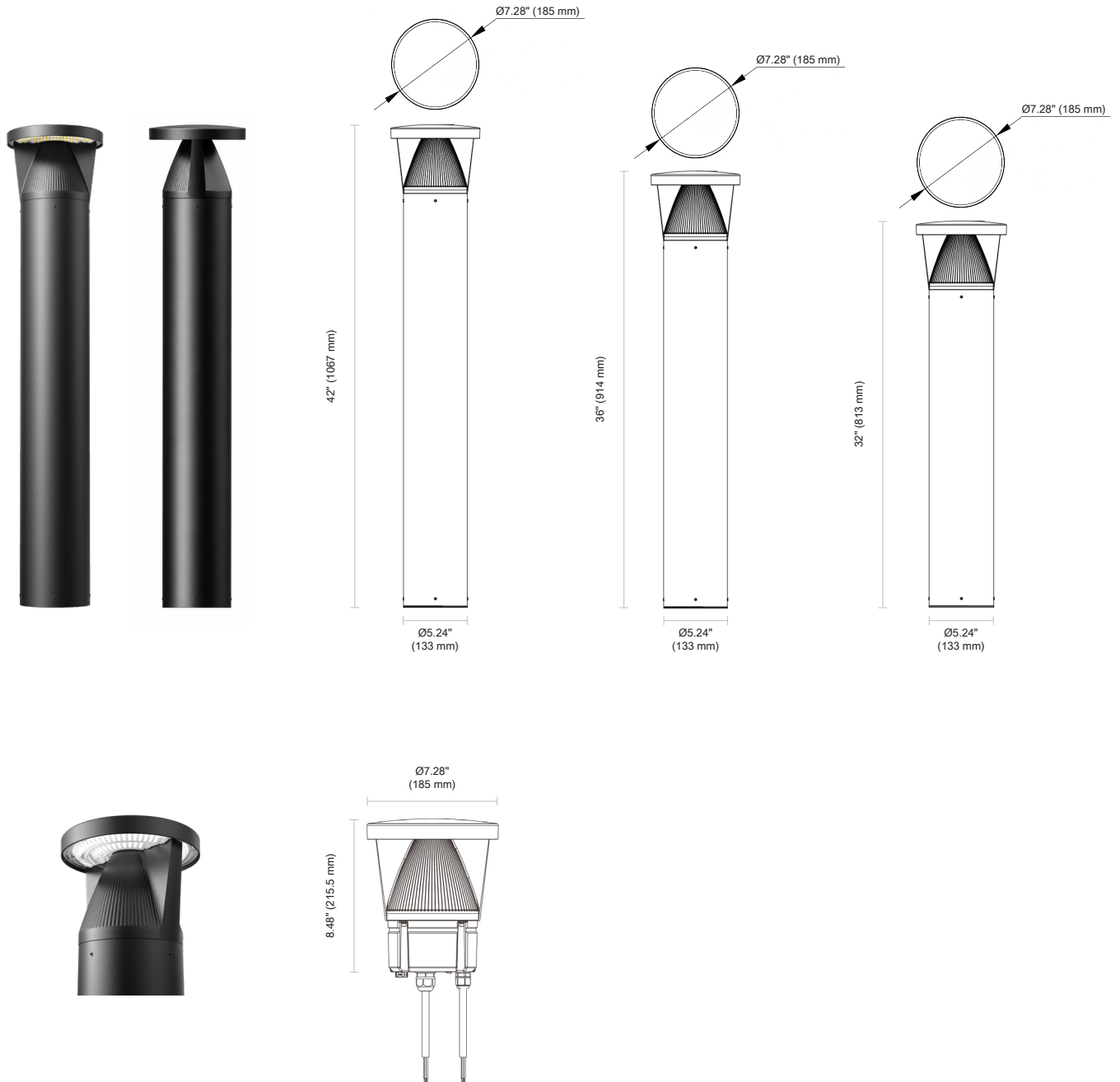
CCT Selectable 3000K, 4000K, 5000K with excellent color consistency.

Thermal Management The aluminum housing serves as an efficient heat sink to maximize lifespan, maintaining heat sink temperatures between 60-70°C

# PM-BL09

## LED BOLLARD LIGHT SPECIFICATIONS

### PRODUCT MODEL & DIMENSIONS



# PM-BL09

## LED BOLLARD LIGHT SPECIFICATIONS

### PRODUCT ORDERING GUIDE

EXAMPLE: PM-BL09-25-32-F-V-B-PH

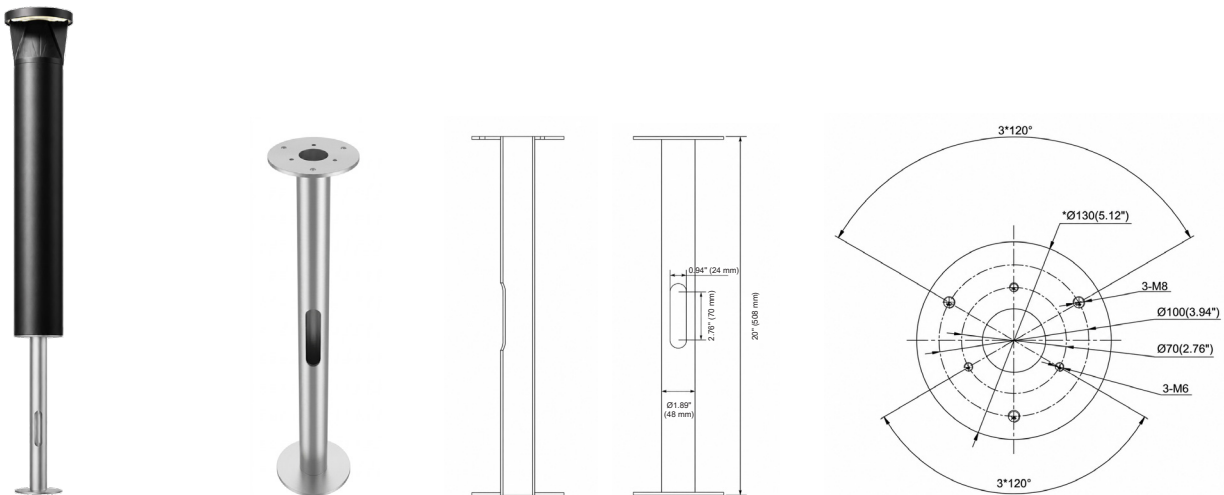
|                |            |            |            |           |                 |                |
|----------------|------------|------------|------------|-----------|-----------------|----------------|
| <b>PM-BL09</b> | <b>-25</b> | <b>-32</b> | <b>-F</b>  | <b>-V</b> | <b>-B</b>       | <b>-PH</b>     |
| Series         | Wattage    | Height     | Beam Angle | Dimming   | Mounting Option | Control Option |

| SERIES  | WATTAGE                  | HEIGHT   | BEAM ANGLE                   | DIMMING                          | MOUNTING OPTIONS                        | CONTROL OPTIONS                            |
|---------|--------------------------|--|------------------------------|----------------------------------|---|--|
| PM-BL09 | 25: 15/20/25W Selectable | 32: 32 Inches<br>42: 42 Inches<br>XX: 32 - 42 Inches | F: Full Zone<br>H: Half Zone | V: 0-10V <sup>①</sup><br>N: None | A: Anchor Bolt<br>B: Backfilled Anchore | PH: Photocell<br>PIR: PIR Microwave Sensor |

① Power-selectable and 0-10V dimming functions cannot be used simultaneously. Only one function can be utilized at a time, depending on application requirements. 0-10V function only available at 25W single wattage.

## ACCESSORIES

### Backfilled Anchor



### Anchor Bolt Templates



# PM-BL09

## LED BOLLARD LIGHT SPECIFICATIONS

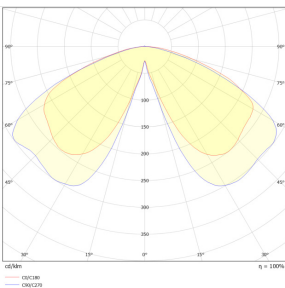


### FINISHING COLOR

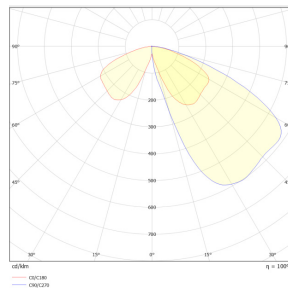


Black

### LIGHT DISTRIBUTION



Full Zone



Half Zone

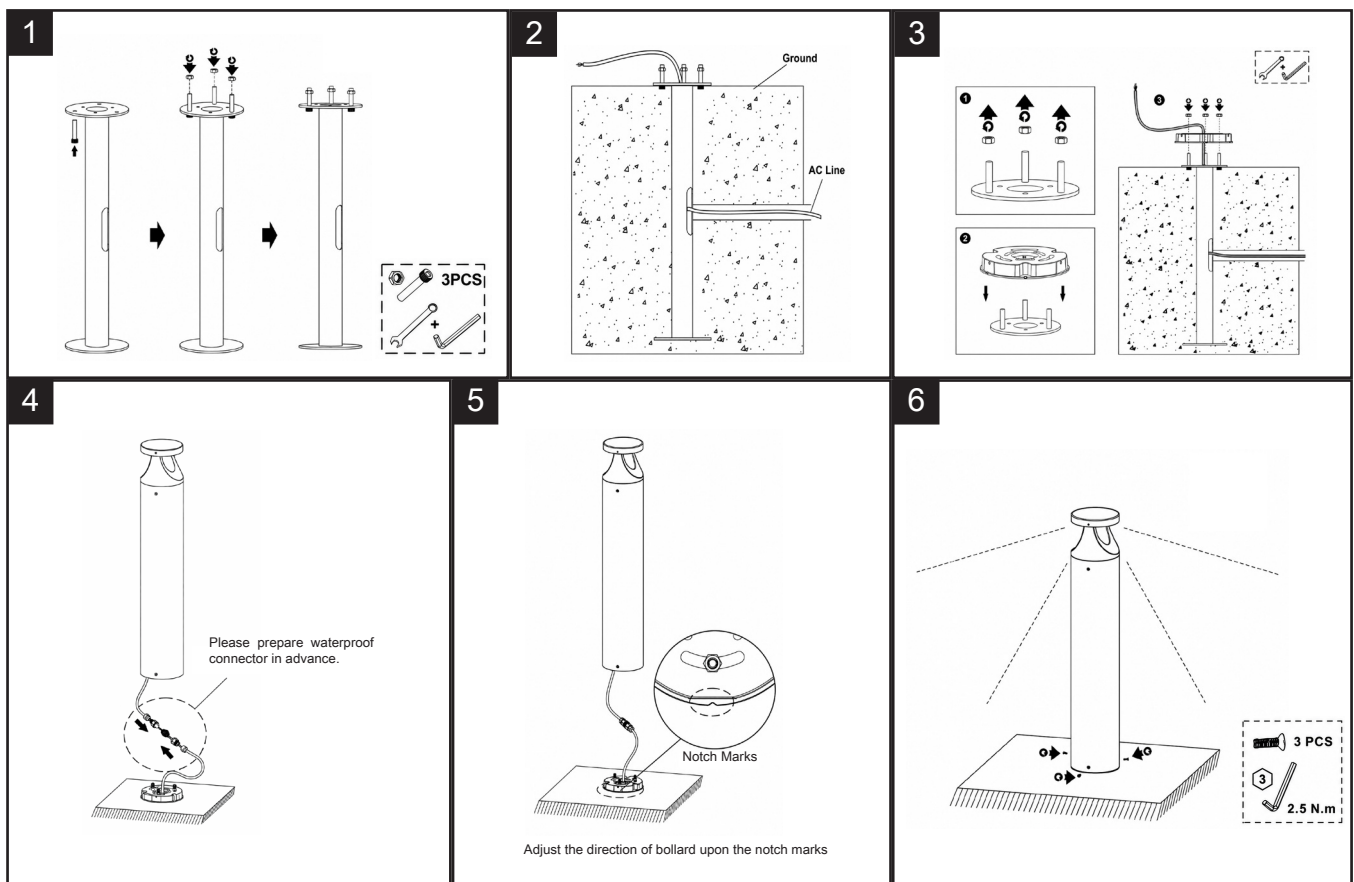
### INSTALLATION INSTRUCTIONS

Please read these instructions carefully before commencing installation and retain for future reference. If in doubt, we advise that you consult a qualified electrician to install the product. These products must not be modified. If any modification is made it may invalidate the warranty and may render the product unsafe. All electrical installations must be carried out according to national electrical code & local regulations.

#### Important Safety Notes

1. Switch off the electricity at the mains before commencing installation (if a fuse box is used) remove the appropriate circuit fuse to avoid accidental switching on of the mains supply.
2. Connect to a 120-277V supply in accordance with relevant electrical standards.
3. Make sure all connections are tight with no loose strands.
4. Ensure fire regulations are not breached when fitting your lights.
5. If you are in any doubt regarding these instructions, consult a qualified electrician.

#### Backfilled Anchor Installation



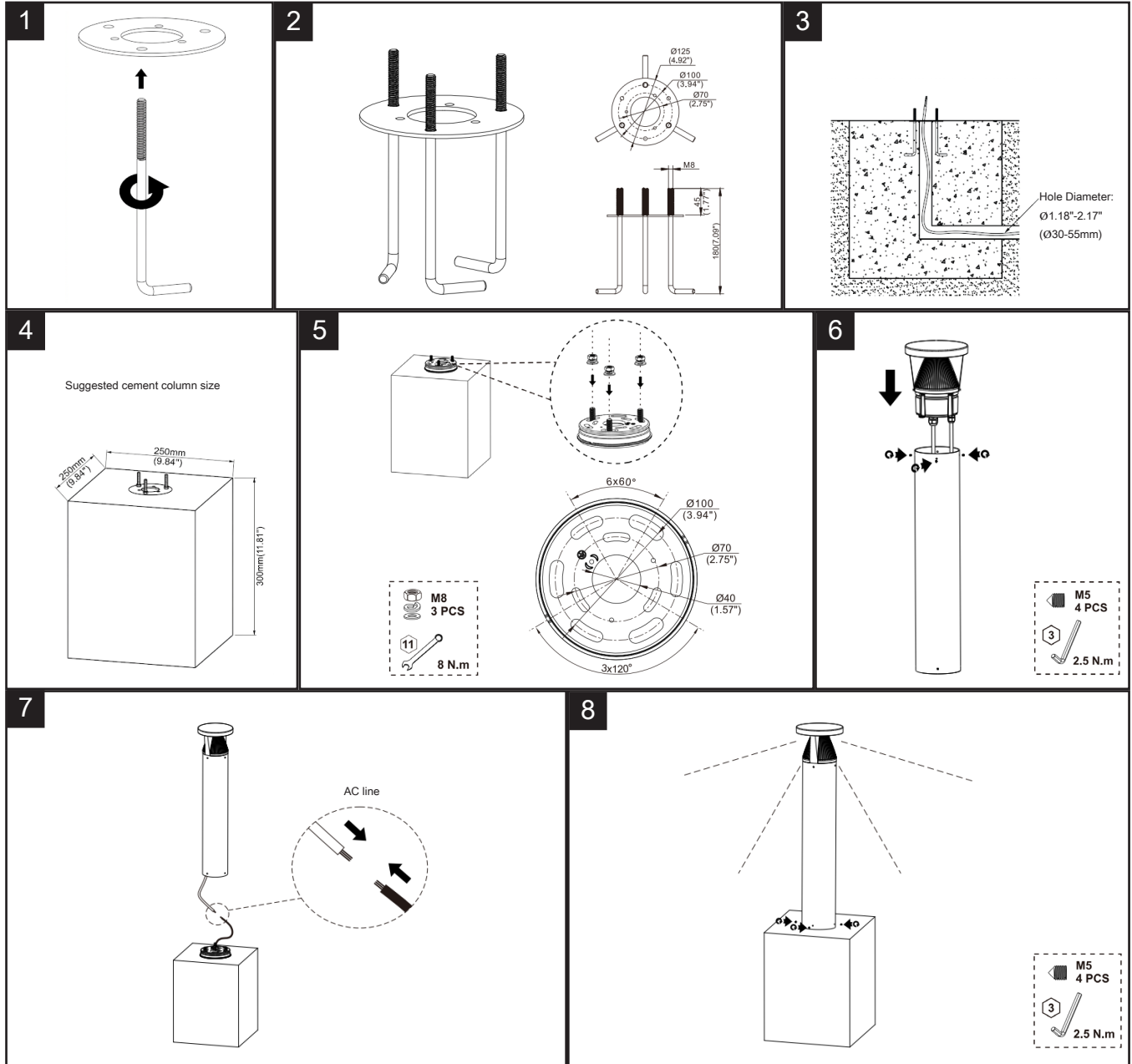
# PM-BL09

## LED BOLLARD LIGHT SPECIFICATIONS

### INSTALLATION INSTRUCTIONS

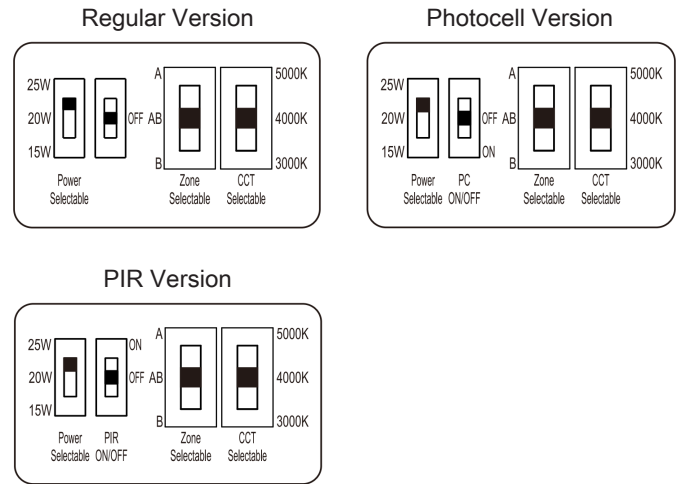
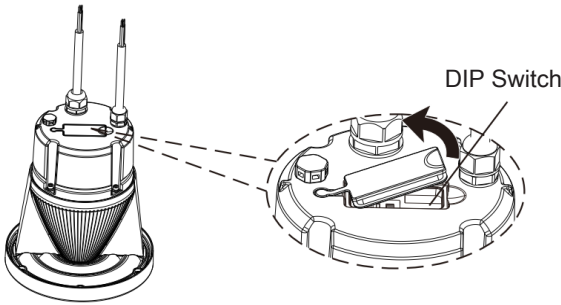
#### Anchor Bolt Installation

Note: Anchor bolt templates are not included if backfilled anchors are purchased.




### POWER/CCT/SENSOR/ZONE SELECTION

 Please power off the luminaire before adjusting the DIP switch.



#### AC Cords

|   |              |  |       |
|---|--------------|--|-------|
| L   | brown        |  | black |
| N   | blue         |  | white |
|  | yellow/green |  | green |

#### DIM Cords

Note: Color for DIM cords subject to the cable lable on luminaire.



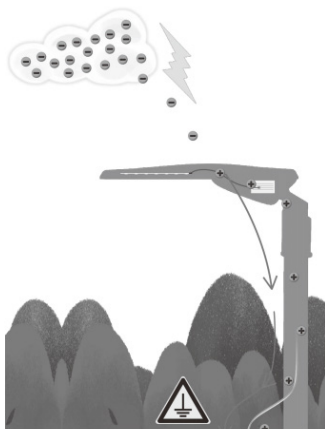
Warning! Do not wire DIM cord to high voltage, or DIM function will fail.

#### Precautions for Outdoor Lighting

Lighting is a common natural phenomenon. When the accumulation of electric charge in the thundercloud to a certain degree, air breakdown will occur to cause electrostatic discharge between the cloud and the earth. Normally there are direct lightning and induction lightning, most LED luminaires damage caused by induction lightning, such as electrostatic induction or magnetic field induction.

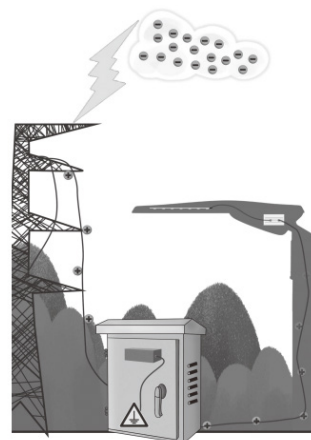
Below pretreatment can reduce lightning hazard, and extend luminaire lifetime.

1. LED luminaire should be effectively grounded



When effective grounding, the electric charge can be introduced to ground quickly

2. Install surge protector in power distribution box



The SPD can absorb most surge energy before