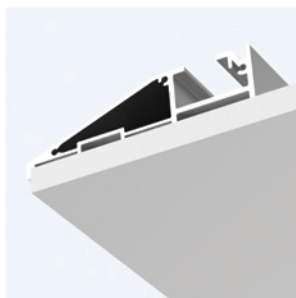


# SIDE TRACKS

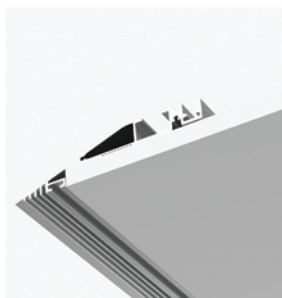
## DARK SLOT SPOTS



PROMAX



HARD EDGE

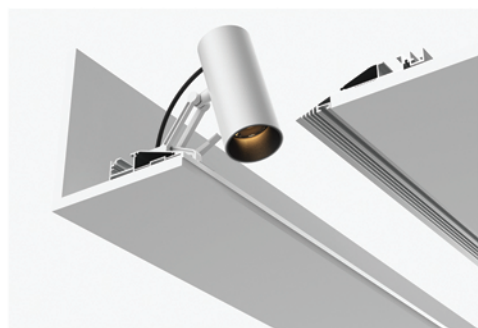
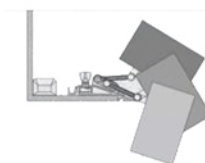
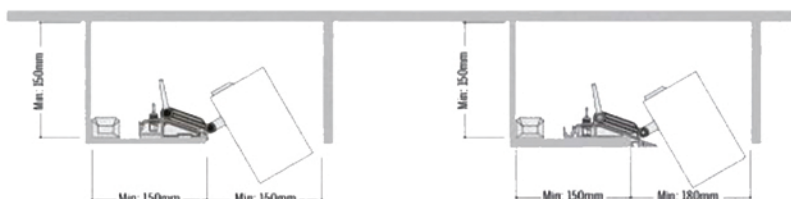


SHARP EDGE

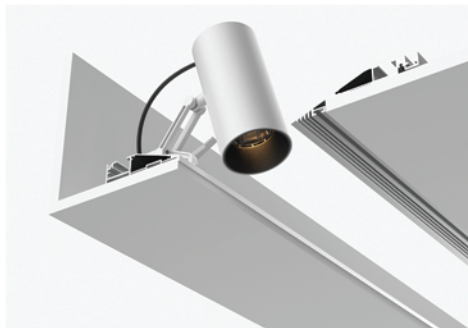


### SPECIFICATIONS:

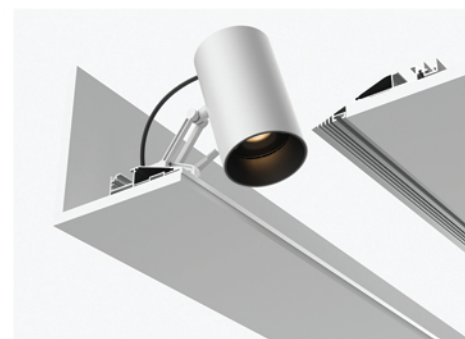
VOLTAGE:	24VDC
SPOT WATTAGE:	15-18/24-28/32-36W
OUTPUT LUMEN:	80LM/W
CCT:	2700K - 6500K
BEAM ANGLE:	15°/24°/36°
SWIVELING	YES
CRI:	90/95
DIMMABLE:	YES
HOUSING COLOR	BLACK/WHITE
IP:	20
LIFE SPAN:	50000 HOURS



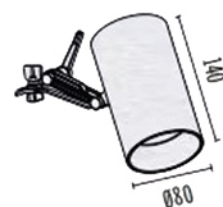
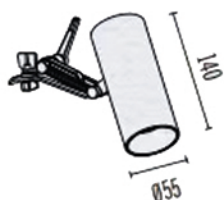
55S  
15-18w



65S  
24-28W



80S  
32-36W



**PREMIER**

3740 William St, Burnaby, BC V5C 3H7

Phone: +1 (604) 294-2334, Toll free: +1 (877) 294-2334, Fax: +1 (604) 294-2126

www.premierlight.ca

PROMAX SIDE TRACKS

LAST UPDATE: JULY, 2023

PAGE 1 of 2

## APPLICATIONS:

DARK SLOT SPOTS SUITABLE FOR SHOW ROOMS, CLUBS, MUSEUMS, RETAIL STORES, ETC.

ETL CERTIFIED, FIVE YEARS WARRANTY.



## ORDERING INFORMATION:

EXAMPLE: PM-ST-S50-15-2700-24-90-0-B

SERIES	TYPE	WATTS	COLOR TEMP.	BEAM ANGLE	CRI	DIMMING	FRAME COLOR
PM-ST	S50	15-18	2700~6500	15	90	0: 0-10V D: Dali	W: White B: Black
	S65	24-28		24			
	S80	32-36		36			