

PM-BL08

LED BOLLARD LIGHT SPECIFICATIONS



Job Information

Project Name	
Type	
Location	
Quantity	
Date	

DESCRIPTION

The BL08 is a high-quality IP66-rated bollard light with a contemporary design. Its die-cast aluminum body, PC optical lens, and sophisticated surface finish transform and enhance the modern aesthetic of any landscape project. Certified with an IP66 rating, BL08 can withstand tough conditions and is resistant to seawater and corrosion.

The professional optical solution provides fully anti-glare, comfortable light uniformity.

PERFORMANCE

MODEL NAME	PM-BL08
POWER CONSUMPTION(±10%)	15/11.3/7.5/4.5W (SELECTABLE) 25/18.75/12.5/6.25W (SELECTABLE)
INPUT VOLTAGE	120-277VAC, 50/60 HZ
LUMINOUS FLUX (±10%)	1365 LM @ 15W, 4000K, Ra70 2275 LM @ 25W, 4000K, Ra70
EFFICACY (4000K RA80)	91 Lm/W
DIMMING	1-10V (Available Only For Single Power)
CCT	3000K/4000K/5000K (Selectable)
CRI	70
BEAM	R02001 (TYPE V) / R02002 TYPE IV
CONTROL	PIR Sensor / Photocell
SURGE PROTECTION	6kV LINE-LINE, 15kV LINE-EARTH
POWER FACTOR	>0.9
FLICKER FACTOR	<5%
THD	<20%
MATERIAL	Aluminum Body, UV Resistant PC Lens
FINISH	Powder Coating
FIXTURE COLOR	Black
LUMINAIRE NET WEIGHT	4.8kG (10.57LBS) TO 7.1kG (15.64LBS)
PRODUCT DIMENSION	Ø5.31"xH20"-42" (Ø135×H500-1092 mm)
IP RATING	IP66
IK RATING	IK10
APPLICATIONS	Outdoor (Such Pathways, Park, etc)
OPERATION TEMPERATURE	-30°C TO +45°C (-22F TO +113F)
CERTIFICATIONS	cETL Listed
WARRANTY	5 Years
LIFESPAN OF LED @TA=25°C	57000 HRS, L90 150000 HRS, L80 236000 HRS, L70

OVERVIEW

- Side shield for asymmetric beam available
- Dimmable
- IP66 and IK10
- Excellent corrosion resistance
- Custom height of 20" to 42" available



SPECIFICATIONS

■ OPTICS

Beam angle type V or IV.

■ ELECTRICAL

Voltage: 120-277 Vac, 50 / 60 Hz
Flicker Factor: <5%
THD: <20%
Power Factor: >0.9
Power Selectable

■ ENVIRONMENT & CERTIFICATIONS

cETL listed for wet locations

■ WARRANTY

5 years limited warranty

■ CONTROL

1-10V Dimming, PIR sensor and photocell available

■ FINISH

The powder-coated finish ensures a uniform appearance, offering long-term durability and superior aesthetics

■ HOUSING MATERIAL

Die-cast aluminum housing and UV resistant PC lens ensures durability and efficiency with anticorrosion protection for harsh environments.

■ LED SYSTEM

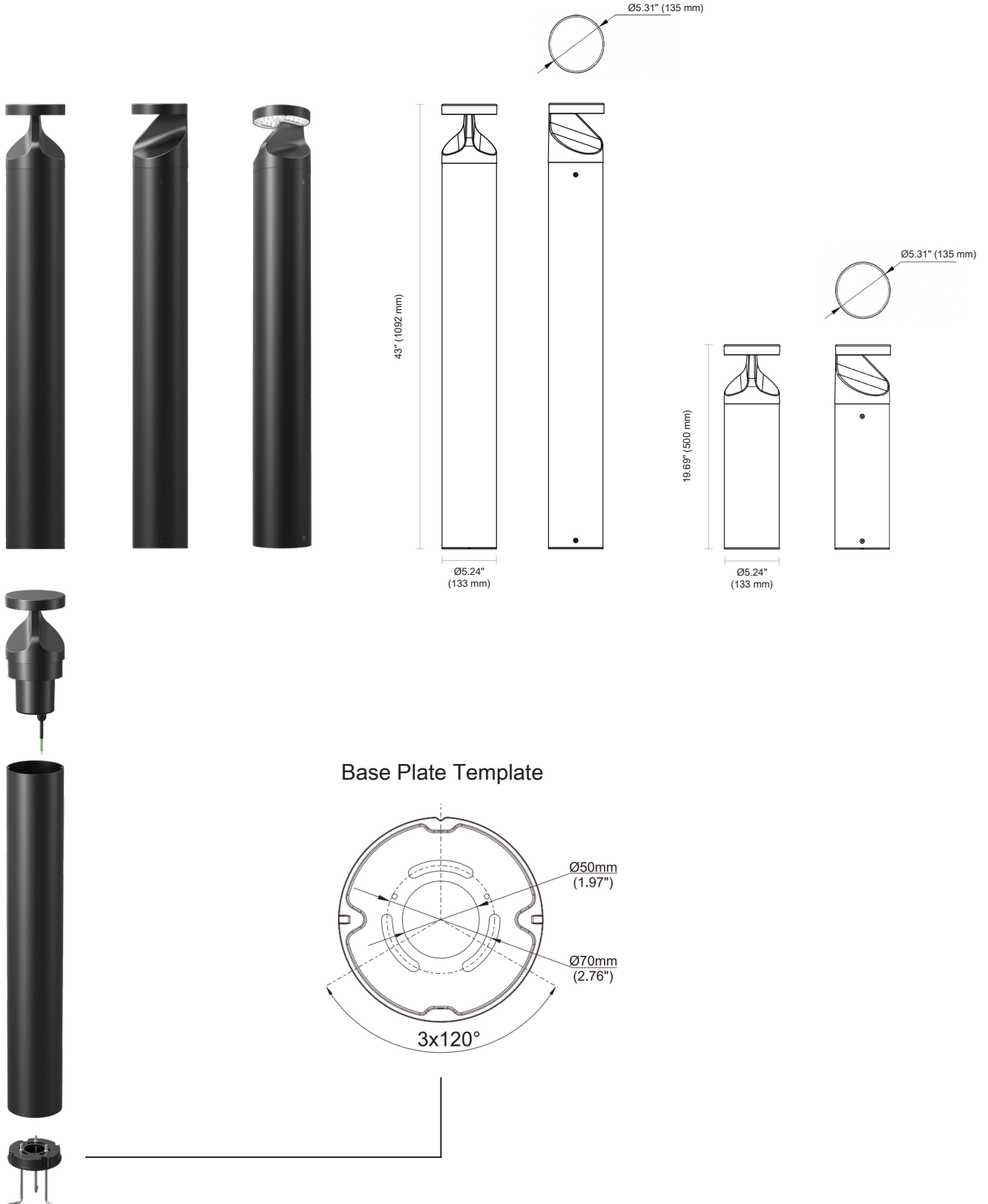
CRI With a 70 color rendering index (CRI), this product delivers adequate illumination.

CCT 3CCT selectable with excellent color consistency

PM-BL08

LED BOLLARD LIGHT SPECIFICATIONS

PRODUCT MODEL & DIMENSIONS



PM-BL08

LED BOLLARD LIGHT SPECIFICATIONS

PRODUCT ORDERING GUIDE

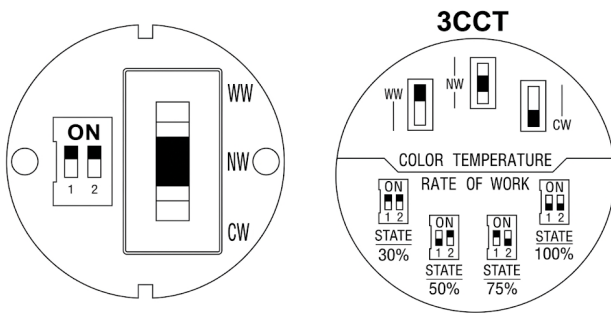
EXAMPLE: PM-BL08-UNV-15-20-V-V-BA

PM-BL08	-UNV	-15	-20	-V	-V	-BA
Series	Voltage	Wattage	Height	Beam Angle	Dimming	Accessories

SERIES	VOLTAGE	WATTAGE	HEIGHT	BEAM ANGLE	DIMMING	ACCESSORIES
PM-BL08	UNV: 120-277VAC	15: 15W 25: 25W WS: Watt Selection	20: 20 Inches 42: 42 Inches XX: 20 - 42 Inches	V: R02001 IV: R02002	V: 1-10V ^① N: None	BA: Backfilled Anchore TBX: Terminal Box With Bracket TBK: Terminal Block PH: Photocell PIR: PIR Microwave Sensor

① Dimming Only Available For Single Power

CCT SELECTABLE



ACCESSORIES



Terminal Block With Bracket

For connecting wires, the height of the bracket depends on the height of bollard



Backfilled Anchor

Ø 5.12" x 19.88" (130x508mm)



Terminal Box

PM-BL08

LED BOLLARD LIGHT SPECIFICATIONS

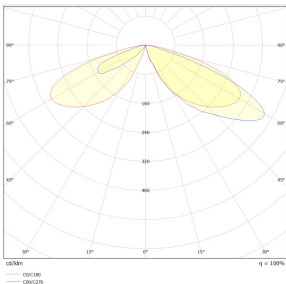


FINISHING COLOR

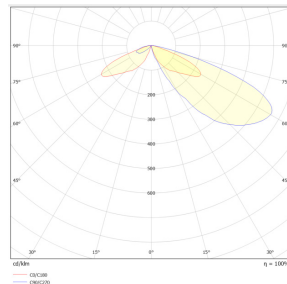


Black

LIGHT DISTRIBUTION



R02001







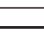
R02002

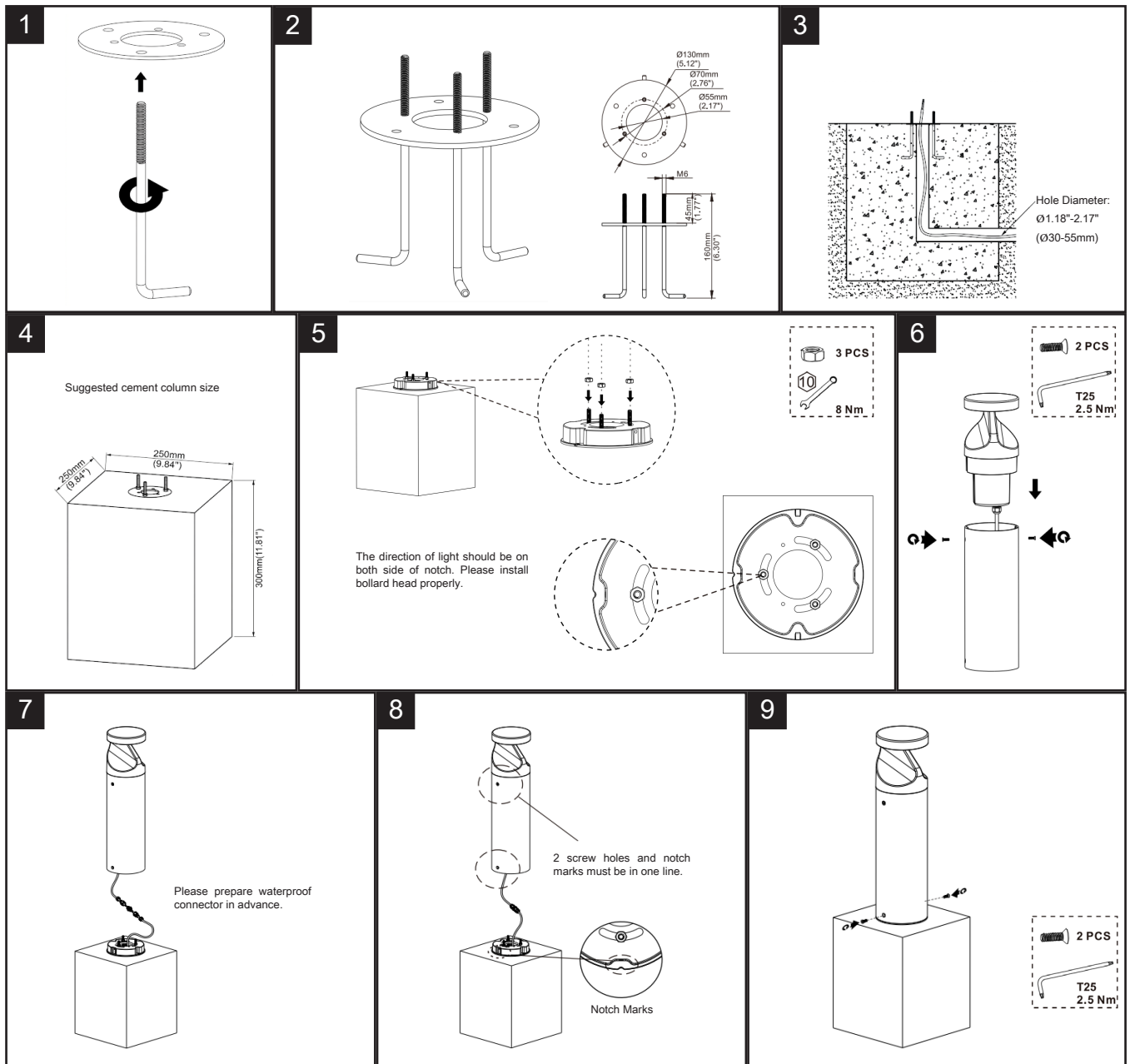
INSTALLATION INSTRUCTIONS

Please read these instructions carefully before commencing installation and retain for future reference. If in doubt, we advise that you consult a qualified electrician to install the product. These products must not be modified. If any modification is made it may invalidate the warranty and may render the product unsafe. All electrical installations must be carried out according to national electrical code & local regulations.

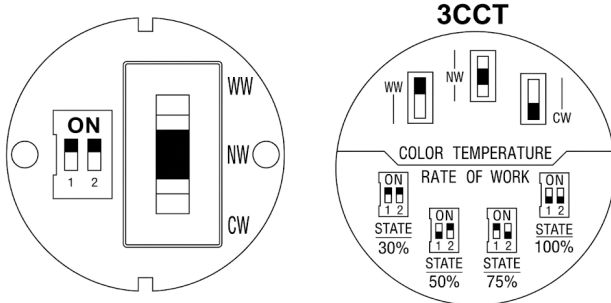
Important Safety Notes

1. Switch off the electricity at the mains before commencing installation (if a fuse box is used) remove the appropriate circuit fuse to avoid accidental switching on of the mains supply.
2. Connect to a 120-277V supply in accordance with relevant electrical standards.
3. Make sure all connections are tight with no loose strands.
4. Ensure fire regulations are not breached when fitting your lights.
5. If you are in any doubt regarding these instructions, consult a qualified electrician.

Packing List		
	Base plate template	1PC
	Screw fixing plate	1PC
	Screw M5*16	4PCS
	Screw M6	3PCS
	Nut M6	3PCS

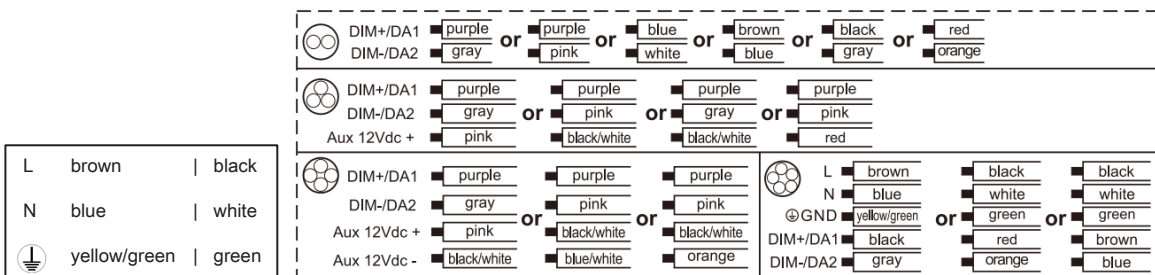


POWER & CCT SELECTABLE



PRODUCT SPECIFICATION	15 W		25 W	
INPUT VOLTAGE	120-277 VAC			
POWER FREQUENCY	50 / 60 Hz			
SIZE	ø5.31"x19.69" (ø135x500mm)	ø5.31"x43" (ø135x1092mm)	ø5.31"x19.69" (ø135x500mm)	ø5.31"x43" (ø135x1092mm)
NET WEIGHT	8.38±0.66Lbs (3.8±0.3kg)	12.57±0.66Lbs (5.7±0.3kg)	8.38±0.66Lbs (3.8±0.3kg)	12.57±0.66Lbs (5.7±0.3kg)
WORKING TEMPRATURE	-30°C TO +50°C (-22F TO +122F)			
STORING TEMPRATURE	-40°C TO +70°C (-40F TO +158F)			

Dimmable



Warning! Do not wire DIM cord to high voltage, or DIM function will fail.

- This luminaire can be outdoor use.
- For type Y attachments:
If the external flexible cable or cord of this luminaire is damaged, it shall be exclusively replaced by the manufacturer or his service agent or a similar qualified person in order to avoid a hazard.
- The light source contained in this luminaire shall be only replaced by the manufacturer or his service agent or a similar qualified person.