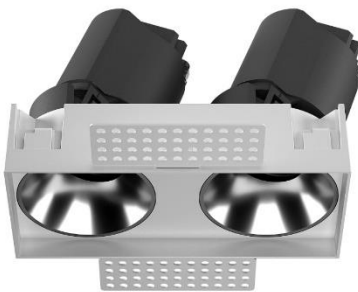
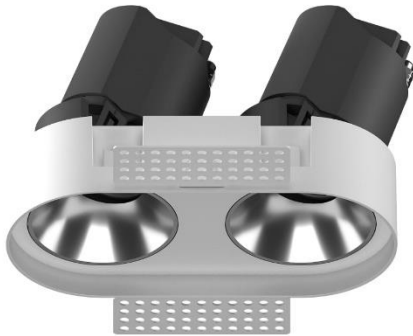


PRIME DUO

TRIM/TRIMLESS DOWNLIGHT (OVAL & SQUARE)



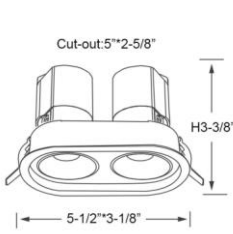
SPECIFICATIONS

| | |
|----------------------------------|---------------------------------|
| MODEL NAME | PRIME DUO (OVAL & SQUARE) |
| POWER CONSUMPTION(±10%) | VARIABLES BASED ON SIZE |
| INPUT VOLTAGE | 100/277VAC |
| EFFICACY(4000K RA80) | 85 LM/W |
| DIMMING | TRIAC/0-10V/DALI |
| CCT | 2700/3000/3500/4000 |
| CRI | 90+ |
| BEAM ANGLE | 15°/24°/38°/60° |
| UGR LEVEL | <19 |
| MOUNTING OPTIONS | TRIM/TRIMLESS RECESSED |
| FINISH | POWDER COATING |
| FIXTURE COLOR | BLACK/WHITE |
| REFLECTOR COLOR | BLACK/WHITE/SILVER |
| OPTICS ACCESSORY OPTION | HONEYCOMB/OPAL |
| IP RATING | IP20 |
| OPERATING TEMPERATURE | -30°C TO + 50°C(-22°F TO 122°F) |
| LIFE TIME OF LED @TA=25°C | 50000 HOURS |
| WARRANTY | 5 YEARS |
| APPLICATIONS | INDOORS |

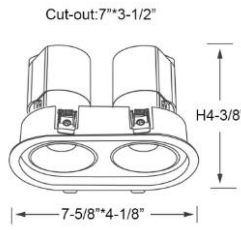
PRIME DUO

TRIM/TRIMLESS DOWNLIGHT (OVAL & SQUARE)

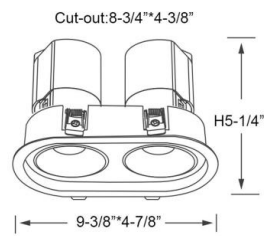
OVAL TRIM DIMENSIONS



2x7W

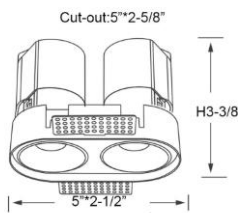


2x10W

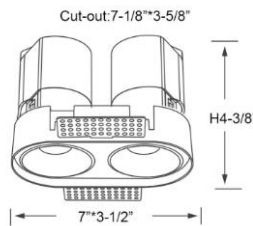


2x20W

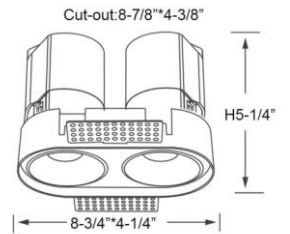
OVAL TRIMLESS DIMENSIONS



2x7W

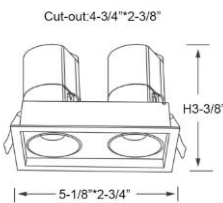


2x10W

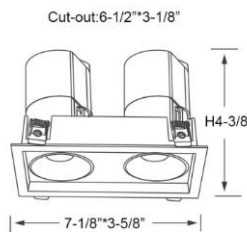


2x20W

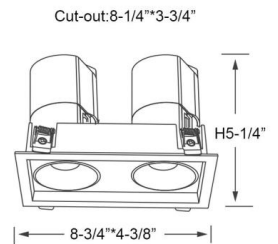
SQUARE TRIM DIMENSIONS



2x7W

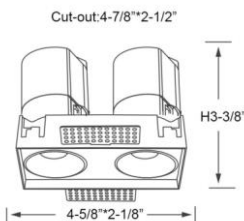


2x10W

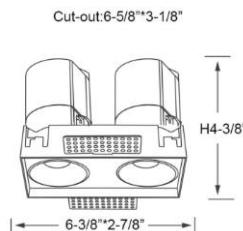


2x20W

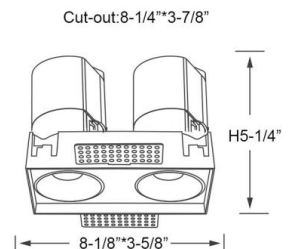
SQUARE TRIMLESS DIMENSIONS



2x7W



2x10W



2x20W

PRIME DUO

TRIM/TRIMLESS DOWNLIGHT (OVAL & SQUARE)

APPLICATION



ORDERING INFORMATION

Example: PM-PRIME-DUO-TL-10WS-2700-15-O-T-B-B

| SERIES | TYPE | SIZE / WATTAGE | CCT | BEAM ANGLE | OPTICS | DIMMING | REFLECTOR COLOR | FRAME COLOR |
|--------------|-------------------------|------------------------|------|------------|--------------|----------|-----------------|-------------|
| PM-PRIME-DUO | T: TRIM TL: TRIMLESS | 7WO: OVAL - (2x7W) | 2700 | 15 | O: OPAL | T: TRIAC | W: WHITE | W: WHITE |
| | | 10WO: OVAL - (2X10W) | 3000 | 24 | H: HONEYCOMB | V: 0-10V | B: BLACK | B: BLACK |
| | | 20WO: OVAL - (2X20W) | 3500 | 38 | | D: DALI | S: SILVER | |
| | | 7WS: SQUARE - (2x7W) | 4000 | 60 | | | | |
| | | 10WS: SQUARE - (2X10W) | | | | | | |
| | | 20WS: SQUARE - (2X20W) | | | | | | |

85 LM/W, 100/277VAC



3740 William St, Burnaby, BC V5C 3H7

Phone: +1 (604) 294-2334, Toll free: +1 (877) 294-2334, Fax: +1 (604) 294-2126

www.premierlight.ca

PROMAX PRIME DUO DOWNLIGHT

Last update: Mar. 2024

Page 3 of 3