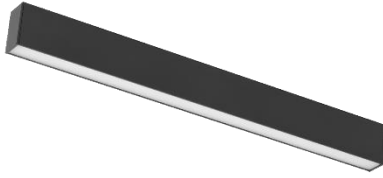


# LINEAR32

## MAGNETIC TRACK SERIES



## SPECIFICATIONS

■ Sandy Black □ Sandy White

<b>Model No.</b>	Linear32
<b>Power Consumption(±10%)</b>	13W
<b>Input Voltage</b>	24VDC
<b>Driver Type</b>	Constant Current (CC)
<b>Dimming</b>	Yes
<b>Luminous Flux (±10%)</b>	895 lm
<b>Efficacy(4000K Ra70)</b>	69 lm/W
<b>Correlated Color Temperature</b>	2700K, 3000K, 3500K, 4000K, 5000K
<b>Color Rendering Index</b>	Ra80 (Ra90 optional)
<b>Beam Angle</b>	Diffuse
<b>Mounting Option</b>	Track Mounted
<b>Material</b>	Aluminum Alloy Body, PC Optical Lens
<b>Finish</b>	Powder Coating
<b>Fixture Color</b>	Black/White
<b>IP Rating</b>	IP20
<b>Operating Temperature</b>	-30°C to + 50°C(-22°F to 122°F)
<b>Life Time of LED @Ta=25°C</b>	50000 Hours
<b>Warranty</b>	5 Years
<b>Application</b>	Residential, Retail, Office, etc.

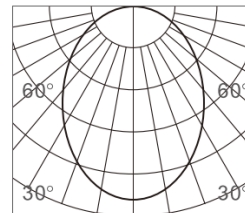
## DIMENSIONS



## DISTRIBUTION

3000K 90Ra

Diffuse



h(m)	E(lx)	Φ(m)
1	344	Φ2.47
2	86	Φ4.94
3	38	Φ7.41
4	21	Φ9.88
5	13	Φ12.35



# LINEAR32

## MAGNETIC TRACK SERIES



### ORDERING INFORMATION

EXAMPLE: PR-MT-LN32-S-B-3000-80-T-D

SERIES	TRACK	FIXTURE COLOR	CCT(K°)	CRI	DIMMING	BEAM ANGLE
PR-MT-LN32	S: Senior	B: Black	2700	80	D: Dali	D: Diffuse
		W: White	3000	90	T: Triac	
			3500		V: 0-10V	
			4000		O: None	
			5000			

