

DOT06

MAGNETIC TRACK SERIES



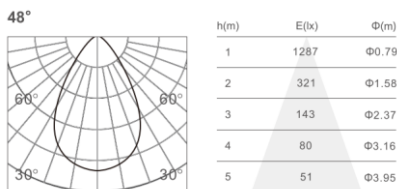
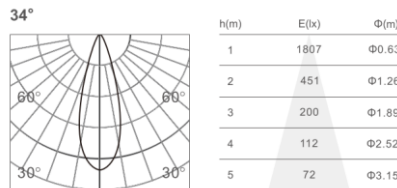
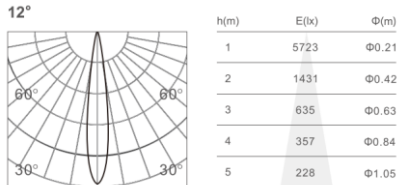
SPECIFICATIONS

■ Sandy Black □ Sandy White

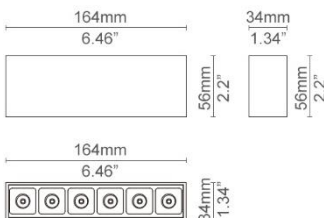
Model No.	Dot06
Power Consumption(±10%)	8W
Input Voltage	24VDC
Driver Type	Constant Current (CC)
Dimming	Yes
Luminous Flux (±10%)	733 lm
Efficacy(4000K Ra70)	92 lm/W
Correlated Color Temperature	2700K, 3000K, 3500K, 4000K, 5000K
Color Rendering Index	Ra80 (Ra90 optional)
Beam Angle	12°, 34°, 48°
Mounting Option	Track Mounted
Material	Aluminum Alloy Body, PC Optical Lens
Finish	Powder Coating
Fixture Color	Black/White
IP Rating	IP20
Operating Temperature	-30°C to + 50°C(-22°F to 122°F)
Life Time of LED @Ta=25°C	50000 Hours
Warranty	5 Years
Application	Residential, Retail, Office, etc.

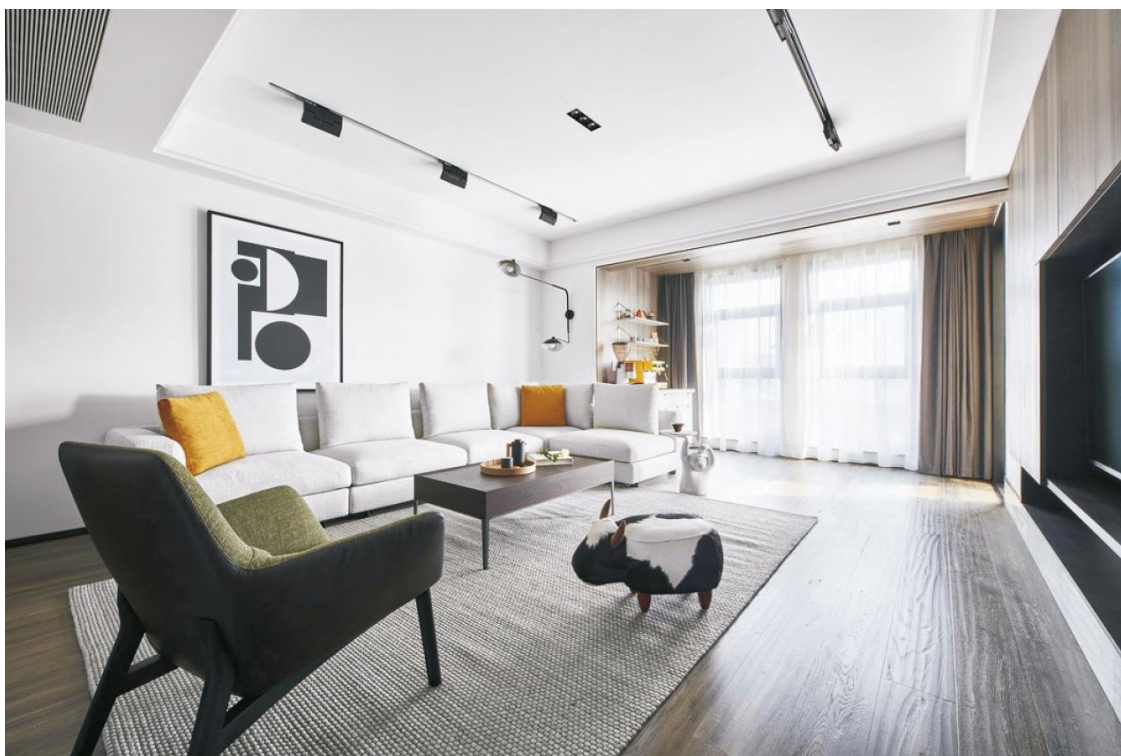
DISTRIBUTION

3000K 90Ra



DIMENSIONS





ORDERING INFORMATION

EXAMPLE: PR-MT-DOT06-S-B-3000-80-T-34

SERIES	TRACK	FIXTURE COLOR	CCT(K°)	CRI	DIMMING	BEAM ANGLE
PR-MT-DOT06	S: Senior	B: Black	2700	80	D: Dali	12°
		W: White	3000	90	T: Triac	34°
			3500		V: 0-10V	48°
			4000			
			5000			