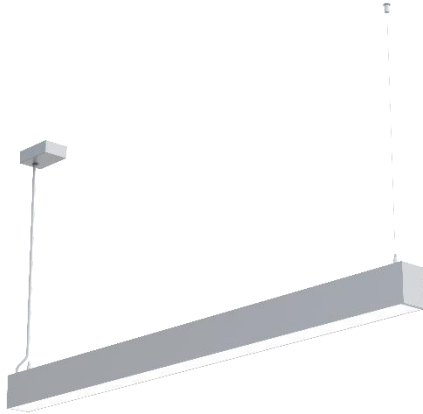


PL-02

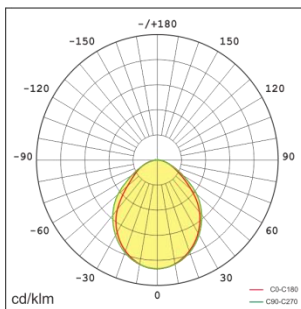
PENDANT LINEAR LIGHT (SINGLE/LINKABLE)

SPECIFICATIONS

Model No.	PL-02
Power Consumption(±10%)	30W / 40W
Input Voltage	120VAC
Luminous Flux (±10%)	3600 lm / 4800 lm
Efficacy(4000K Ra70)	120 lm/W
Correlated Color Temperature	3000K/4000K/6000K
Color Rendering Index	>80
Dimming	Yes
Material	Aluminum body, PC lens
Finish	Powder Coating
Fixture Color	White
IP Rating	IP20
Life Time of LED @Ta=25°C	50000 Hours
Warranty	5 Years
Application	Residential, Retail, Office, etc.



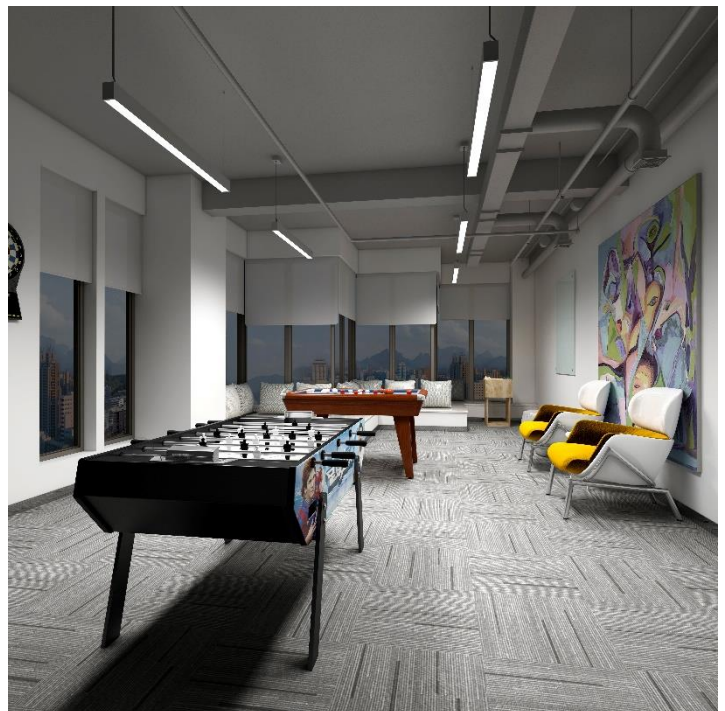
DISTRIBUTION



DIMENSIONS

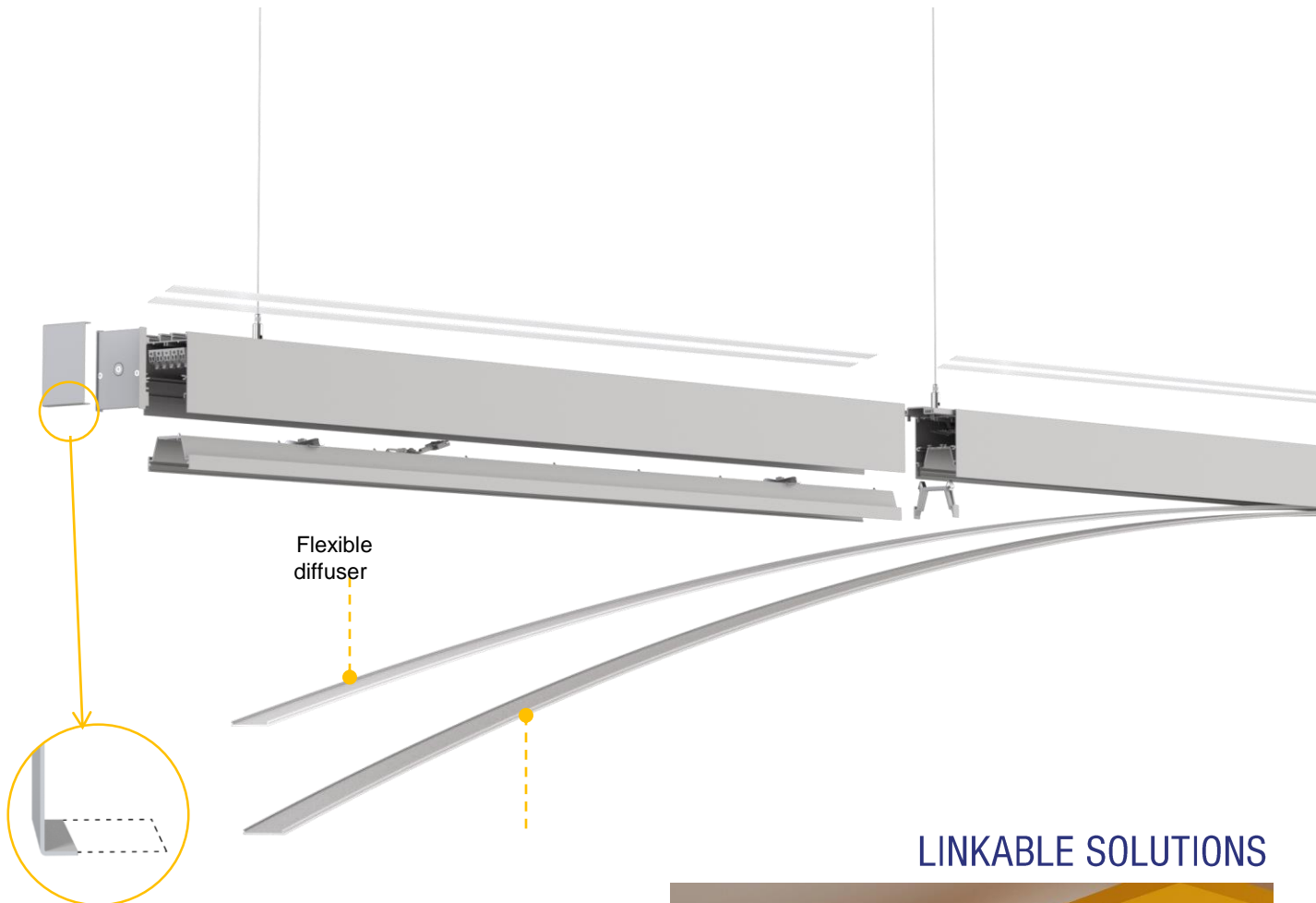


SINGLE SOLUTIONS



PL-02

PENDANT LINEAR LIGHT (SINGLE/LINKABLE)



Flexible
diffuser

Flexible
prisma plate

LINKABLE SOLUTIONS

